

青岛瑞强机电技术有限公司

钣金连接紧固件及配套设备一站式服务专家

2019

产品样册

90° 环槽铆钉系列产品



90° 沉头环槽铆钉种类:

(碳钢)



铆芯	材料	碳钢
	表面处理	环保三价电镀蓝白锌
铆壳	材料	低碳钢
	表面处理	环保三价电镀蓝白锌

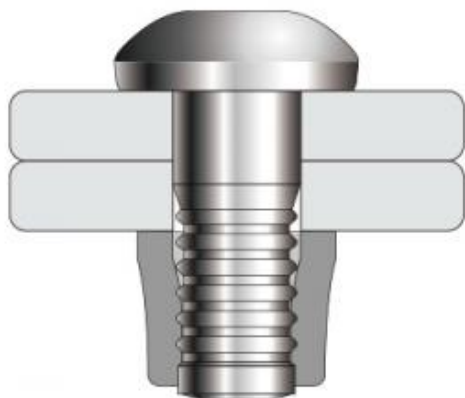
(铝合金)



铆芯	材料	铝合金
	表面处理	抛光
铆壳	材料	铝合金
	表面处理	抛光

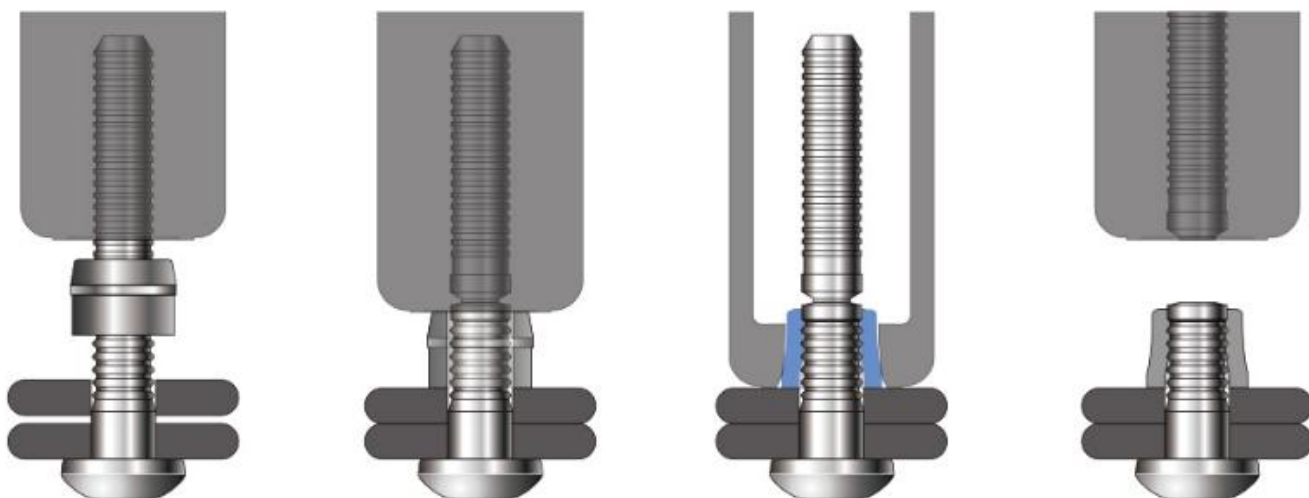
该文件仅用于介绍此类产品，并非旨在承诺任何声明，暗示或有法律效益的保证；所有保修权仅包含在我们的书面报价，合同书/采购订单中。建议客户了解每款产品的特性，安装方式，及其正确使用方法。

90° 沉头环槽铆钉



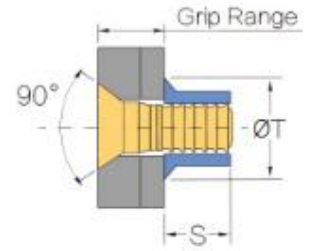
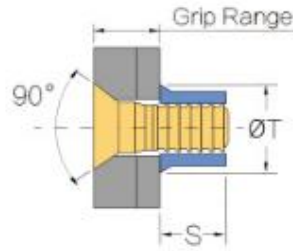
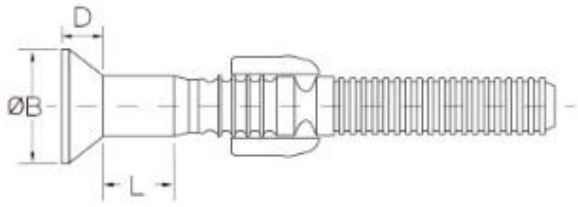
1. 宽铆接范围减少了紧固件库存和简化了库存控制，适应材料厚度的宽度变化范围。
2. 对于高强度组装的高抗剪拉强度。
3. 高强度受控铆接提供了卓越的抗震性。
4. 快速安装，针对大范围的应用。
5. 盘头、沉头、大盘头的铆钉头类型适合多种应用。
6. 便于检查撞击。
7. 对于专用安装工具的大范围选择。

铆接过程:



该文件仅用于介绍此类产品，并非旨在承诺任何声明，暗示或有法律效益的保证；所有保修权仅包含在我们的书面报价，合同书/采购订单中。建议客户了解每款产品的特性，安装方式，及其正确使用方法。

铆接过程:



90° 沉头环槽铆钉(碳钢)

Diameter mm	Grip Range		Drill Diameter Nom	L	B	D	S	T	S	T	Shear Force (KN Nom)	Tensile Force (KN Nom)	Product model No.
	Min	Max		Nom	Max	Max	Max	Max	Max	Max			
直径	最小范围	最大范围	开孔直径				标准套环		大法兰套环		抗剪力	抗拉力	产品型号
4.8 mm (3/16")	3.18	6.35	5.10	3.18	8.90	2.20	WS-62600	9.40 8.00	WS-15600	10.20 9.90	8.63	7.34	WS-LOCKBOLT-22603
	4.75	7.92		4.75									WS-LOCKBOLT-22604
	6.35	9.53		6.35									WS-LOCKBOLT-22605
	7.92	11.10		7.92									WS-LOCKBOLT-22606
	9.53	12.70		9.53									WS-LOCKBOLT-22607
	11.10	14.27		11.10									WS-LOCKBOLT-22608
	12.70	15.88		12.70									WS-LOCKBOLT-22609
	14.27	17.45		14.27									WS-LOCKBOLT-22610
	15.88	19.05		15.88									WS-LOCKBOLT-22611
	17.45	20.62		17.45									WS-LOCKBOLT-22612
	19.05	22.23		19.05									WS-LOCKBOLT-22613
	20.62	23.80		20.62									WS-LOCKBOLT-22614
	22.23	25.40		22.23									WS-LOCKBOLT-22615
	23.80	26.97		23.80									WS-LOCKBOLT-22616
25.40	28.58	25.40	WS-LOCKBOLT-22617										
26.97	30.15	26.97	WS-LOCKBOLT-22618										
28.58	31.75	28.58	WS-LOCKBOLT-22619										
30.15	33.32	30.15	WS-LOCKBOLT-22620										
6.4 mm (1/4")	3.18	6.35	6.60	3.18	11.90	2.90	WS-62800	12.20 10.60	WS-15800	13.20 13.10	14.73	13.35	WS-LOCKBOLT-22803
	4.75	7.92		4.75									WS-LOCKBOLT-22804
	6.35	9.53		6.35									WS-LOCKBOLT-22805
	7.92	11.10		7.92									WS-LOCKBOLT-22806
	9.53	12.70		9.53									WS-LOCKBOLT-22807
	11.10	14.27		11.10									WS-LOCKBOLT-22808
	12.70	15.88		12.70									WS-LOCKBOLT-22809
14.27	17.45	14.27	WS-LOCKBOLT-22810										
6.4mm (1/4")	15.88	19.05	6.60	15.88	11.90	2.90	WS-62800	12.20 10.60	WS-15800	13.20 13.10	14.73	13.35	WS-LOCKBOLT-22811
	17.45	20.62		17.45									WS-LOCKBOLT-22812
	19.05	22.23		19.05									WS-LOCKBOLT-22813
	20.62	23.80		20.62									WS-LOCKBOLT-22814
	22.23	25.40		22.23									WS-LOCKBOLT-22815
	23.80	26.97		23.80									WS-LOCKBOLT-22816
	26.97	30.15		26.97									WS-LOCKBOLT-22818
30.15	33.32	30.15	WS-LOCKBOLT-22820										

8.0 mm (5/16")	3.18	9.53	8.20	3.18	14.80	3.60	WS-621000 15.50 13.30	WS-151000 16.80 16.30	22.38	21.81	WS-LOCKBOLT-221004
	6.35	12.70		6.35							WS-LOCKBOLT-221006
	9.53	15.88		9.53							WS-LOCKBOLT-221008
	12.70	19.05		12.70							WS-LOCKBOLT-221010
	15.88	22.23		15.88							WS-LOCKBOLT-221012
	19.05	25.40		19.05							WS-LOCKBOLT-221014
	22.23	28.58		22.23							WS-LOCKBOLT-221016
	25.40	31.75		25.40							WS-LOCKBOLT-221018
	28.58	34.93		28.58							WS-LOCKBOLT-221020
	31.75	38.10		31.75							WS-LOCKBOLT-221022
	34.93	41.28		34.93							WS-LOCKBOLT-221024
	38.10	44.45		38.10							WS-LOCKBOLT-221026
	41.28	47.63		41.28							WS-LOCKBOLT-221028
	44.45	50.80		44.45							WS-LOCKBOLT-221030
47.63	53.98	47.63	WS-LOCKBOLT-221032								
9.6mm (3/8")	6.35	12.70	9.80	6.35	17.70	4.40	WS-621200 18.60 15.50	WS-151200 20.00 20.00	32.08	28.93	WS-LOCKBOLT-221206
	9.53	15.88		9.53							WS-LOCKBOLT-221208
	12.70	19.05		12.70							WS-LOCKBOLT-221210
	15.88	22.23		15.88							WS-LOCKBOLT-221212
	19.05	25.40		19.05							WS-LOCKBOLT-221214
	22.23	28.58		22.23							WS-LOCKBOLT-221216
	25.40	31.75		25.40							WS-LOCKBOLT-221218
	28.58	34.93		28.58							WS-LOCKBOLT-221220
	31.75	38.10		31.75							WS-LOCKBOLT-221222
	34.93	41.28		34.93							WS-LOCKBOLT-221224
	38.10	44.45		38.10							WS-LOCKBOLT-221226
	41.28	47.63		41.28							WS-LOCKBOLT-221228
	44.45	50.80		44.45							WS-LOCKBOLT-221230
	47.63	53.98		47.63							WS-LOCKBOLT-221232

90° 沉头环槽铆钉（铝合金）

 Diameter mm	 Grip Range		 Drill Diameter Nom	L	B	D	S	T	S	T	 Shear Force (kN Nom)	 Tensile Force (kN Nom)	 Product model No.
	Min	Max		Nom	Nom	Max	Max	Max	Max	Max			
直径	最小范围	最大范围	开孔直径				标准套环		大法兰套环		抗剪断力	抗拉断力	产品型号
4.8 mm (3/16")	3.18	6.35	5.10	3.18	8.90	2.20	WS-37600 9.40 8.00	WS-39600 10.20 9.90	4.67	4.72	WS-LOCKBOLT-02603		
	4.75	7.92		4.75							WS-LOCKBOLT-02604		
	6.35	9.53		6.35							WS-LOCKBOLT-02605		
	7.92	11.10		7.92							WS-LOCKBOLT-02606		
	9.53	12.70		9.53							WS-LOCKBOLT-02607		
	11.10	14.27		11.10							WS-LOCKBOLT-02608		
	12.70	15.88		12.70							WS-LOCKBOLT-02609		
	14.27	17.45		14.27							WS-LOCKBOLT-02610		
	15.88	19.05		15.88							WS-LOCKBOLT-02611		
	17.45	20.62		17.45							WS-LOCKBOLT-02612		
	19.05	22.23		19.05							WS-LOCKBOLT-02613		
	20.62	23.80		20.62							WS-LOCKBOLT-02614		
	22.23	25.40		22.23							WS-LOCKBOLT-02615		
	23.80	26.97		23.80							WS-LOCKBOLT-02616		
	25.40	28.58		25.40							WS-LOCKBOLT-02617		
6.4 mm (1/4")	3.18	6.35	6.60	3.18	11.80	2.90	WS-37800 12.20 10.60	WS-39800 13.20 13.10	8.34	7.92	WS-LOCKBOLT-02803		
	4.75	7.92		4.75							WS-LOCKBOLT-02804		
	6.35	9.53		6.35							WS-LOCKBOLT-02805		
	7.92	11.10		7.92							WS-LOCKBOLT-02806		
	9.53	12.70		9.53							WS-LOCKBOLT-02807		
6.4 mm (1/4")	11.10	14.27	6.60	11.10	11.80	2.90	WS-37800 12.20 10.60	WS-39800 13.20 13.10	8.34	7.92	WS-LOCKBOLT-02808		
	12.70	15.88		12.70							WS-LOCKBOLT-02809		
	14.27	17.45		14.27							WS-LOCKBOLT-02810		
	15.88	19.05		15.88							WS-LOCKBOLT-02811		
	17.45	20.62		17.45							WS-LOCKBOLT-02812		
	19.05	22.23		19.05							WS-LOCKBOLT-02813		
	20.62	23.80		20.62							WS-LOCKBOLT-02814		
	22.23	25.40		22.23							WS-LOCKBOLT-02815		
	23.80	26.97		23.80							WS-LOCKBOLT-02816		
	26.97	30.15		26.97							WS-LOCKBOLT-02818		
30.15	33.32	30.15	WS-LOCKBOLT-02820										

该文件仅用于介绍此类产品，并非旨在承诺任何声明，暗示或有法律效益的保证；所有保修权仅包含在我们的书面报价，合同书/采购订单中。建议客户了解每款产品的特性，安装方式，及其正确使用方法。

90° 沉头环槽铆钉（铝合金）

8.0 mm (5/16")	3.18	9.53	8.20	3.18	14.80	3.70	WS-371000 15.50 13.30	WS-391000 16.80 16.30	13.02	12.68	WS-LOCKBOLT-021004
	6.35	12.70		6.35							WS-LOCKBOLT-021006
	9.53	15.88		9.53							WS-LOCKBOLT-021008
	12.70	19.05		12.70							WS-LOCKBOLT-021010
	15.88	22.23		15.88							WS-LOCKBOLT-021012
	19.05	25.40		19.05							WS-LOCKBOLT-021014
	22.23	28.58		22.23							WS-LOCKBOLT-021016
	25.40	31.75		25.40							WS-LOCKBOLT-021018
	28.58	34.93		28.58							WS-LOCKBOLT-021020
	31.75	38.10		31.75							WS-LOCKBOLT-021022
	34.93	41.28		34.93							WS-LOCKBOLT-021024
	38.10	44.45		38.10							WS-LOCKBOLT-021026
	41.28	47.63		41.28							WS-LOCKBOLT-021028
	44.45	50.80		44.45							WS-LOCKBOLT-021030
47.63	53.98	47.63	WS-LOCKBOLT-021032								
9.6mm (3/8")	6.35	12.70	9.80	6.35	17.70	4.40	WS-371200 18.60 15.50	WS-391200 20.00 20.00	18.69	18.68	WS-LOCKBOLT-021206
	9.53	15.88		9.53							WS-LOCKBOLT-021208
	12.70	19.05		12.70							WS-LOCKBOLT-021210
	15.88	22.23		15.88							WS-LOCKBOLT-021212
	19.05	25.40		19.05							WS-LOCKBOLT-021214
	22.23	28.58		22.23							WS-LOCKBOLT-021216
	25.40	31.75		25.40							WS-LOCKBOLT-021218
	28.58	34.93		28.58							WS-LOCKBOLT-021220
	31.75	38.10		31.75							WS-LOCKBOLT-021222
	34.93	41.28		34.93							WS-LOCKBOLT-021224
	38.10	44.45		38.10							WS-LOCKBOLT-021226
	41.28	47.63		41.28							WS-LOCKBOLT-021228
	44.45	50.80		44.45							WS-LOCKBOLT-021230
	47.63	53.98		47.63							WS-LOCKBOLT-021232

电话: +86 532 6898 2828

传真: +86 532 6898 2818

邮件: chinawacom@163.com

地址: 青岛市高新区宝源路780号联东U谷18栋

青岛瑞强机电技术有限公司

连接您我，紧固世界！

Wacom

www.chinawacom.com